

Made to Measure Boatcover Form



The Yacht & Dinghy Shop on the Web

Trident Quay
South Shore Road
Gateshead
NE8 3AE
UK



+44(0)191 490 1736



+44(0)191 478 2122



sales@tridentuk.com



www.tridentuk.com

Title - Mr Mrs Ms Other:

Name -

Street -

Town -

County -

Post Code -

Country -

Email -

Tel 1 -

Tel 2 -

Date -

Date Required -

Dinghy Type -

Cover Type - Trailing
Flat (Mast Up)
Boom Up

Fabric - Weathermax
PVC

Please detail any specific requirements or important notes you think we should be made aware of.

Returning your M2M form:

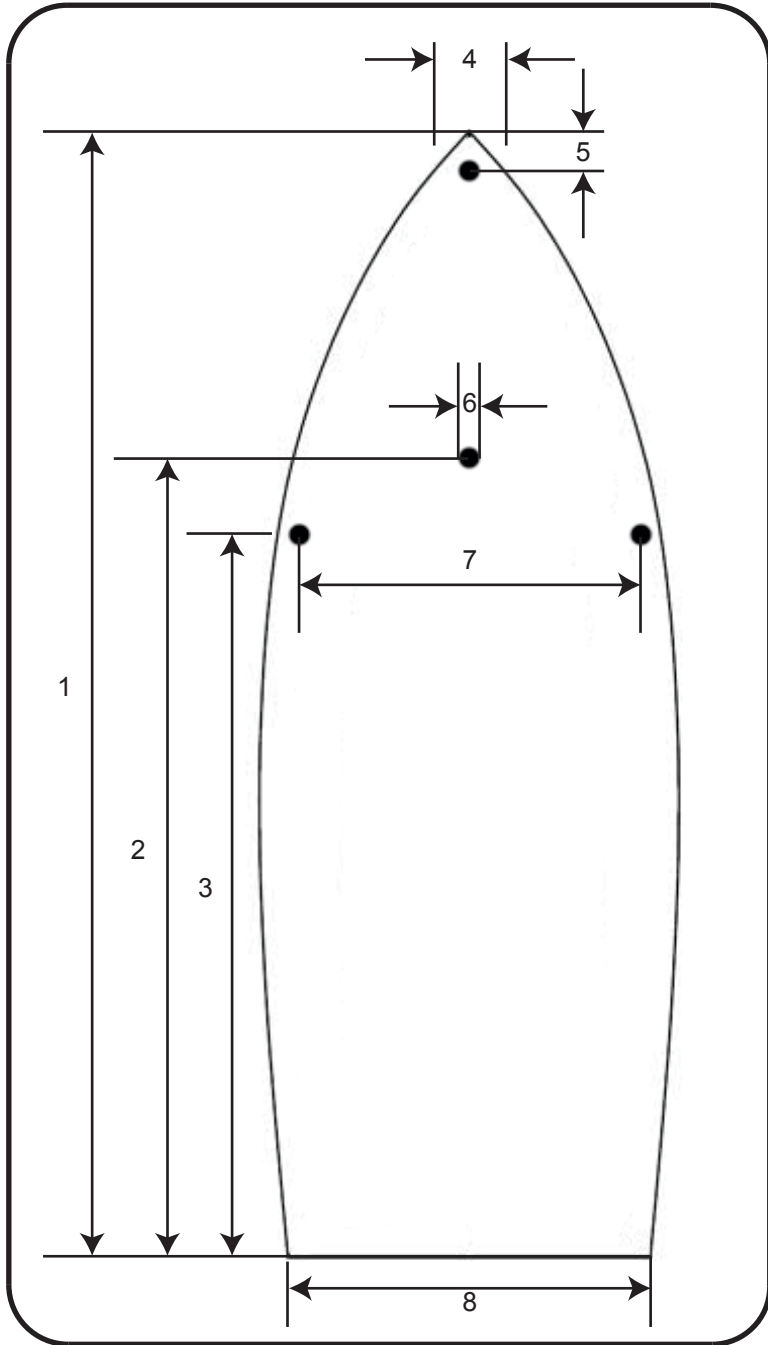
This form can be filled in and returned by email, otherwise you can print it off and return it to us by fax or post.

Payment:

When we receive your made to measure form one of our sales staff will contact you with a final price and to organise payment details.

Delivery:

You should allow 1-2 weeks for manufacture, if you need your cover quicker than this then please give us a call and we will see what we can do.



- 1. Overall Length -
- 2. Transom to back of Mast -
- 3. Transom to Shroud -
- 4. Bow Width -
- 5. Bow to Forestay -
- 6. Mast Diameter -
- 7. Shroud to Shroud -
- 8. Transom Width -

Width of boat at 300mm intervals along centreline (starting from the transom)

- 300 -
- 600 -
- 900 -
- 1200 -
- 1500 -
- 1800 -
- 2100 -
- 2400 -
- 2700 -
- 3000 -
- 3300 -
- 3600 -
- 3900 -
- 4200 -
- 4500 -
- 4800 -
- 5100 -
- 5400 -
- 5700 -

Required for Boom up covers only

- 9. Transom to Back of Mast -
- 10. Bow to Front of Mast -
- 11. Top of Boom to Shearline -

